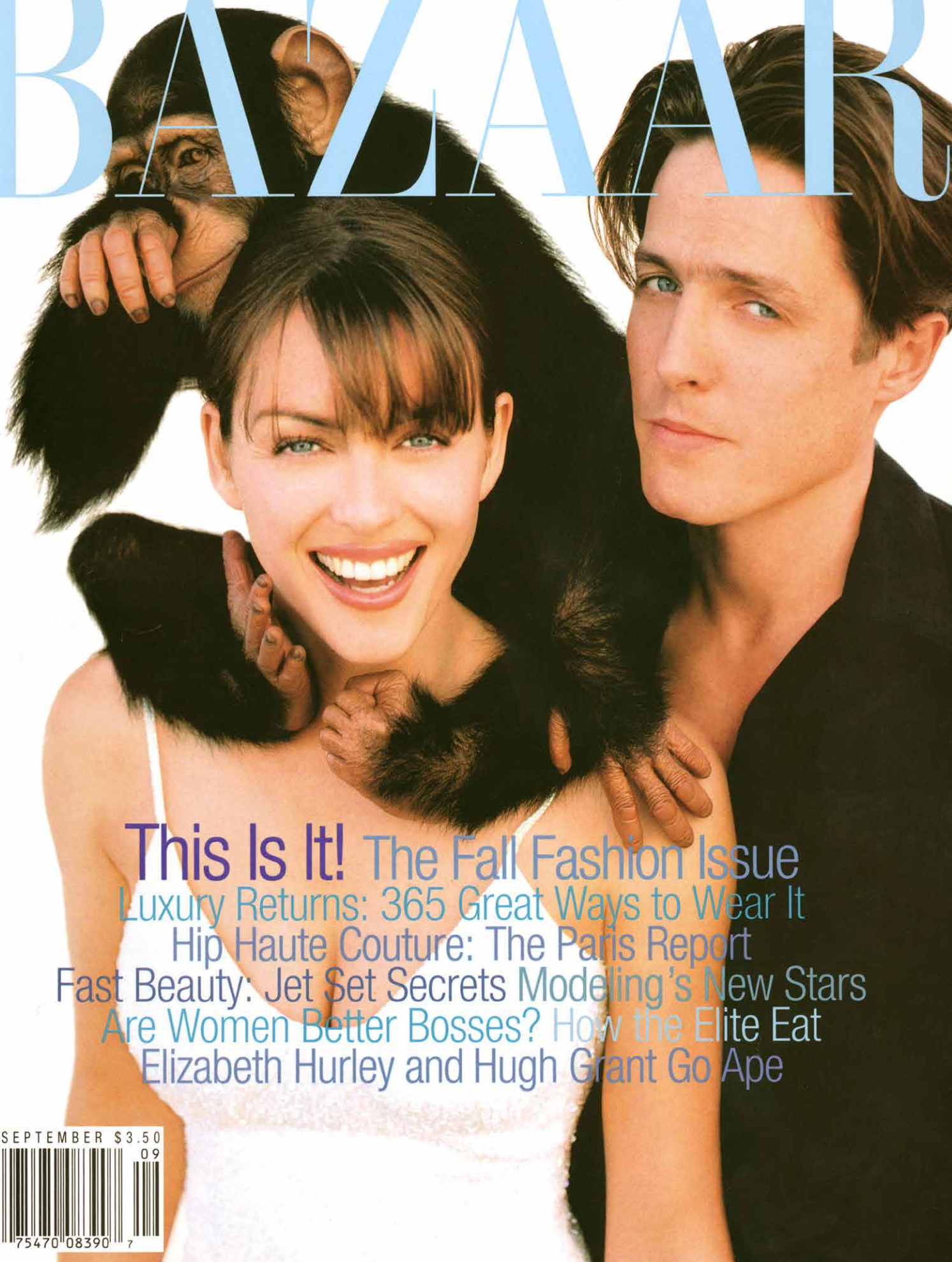


Harper's BAZZAAR



This Is It! The Fall Fashion Issue

Luxury Returns: 365 Great Ways to Wear It

Hip Haute Couture: The Paris Report

Fast Beauty: Jet Set Secrets Modeling's New Stars

Are Women Better Bosses? How the Elite Eat

Elizabeth Hurley and Hugh Grant Go Ape

SEPTEMBER \$3.50

09



0 75470 08390 7

Rooms That Dare

With her recently renovated Park Avenue apartment and Long Island country house, architect Alison Spear is casting colorful new spells.

By Christopher
Mason
Produced by
Wendy Goodman
Photographed by
Oberto Gili



Opposite page: Spear in her New York dining room, on a sofa she designed and had upholstered in Scalamandre fabric. Behind her is Boris Viskin's *Untitled* (1995). This page: The dining room, with a dining table also designed by Spear; a 1950s Venetian chandelier; 1940s pearwood chairs by Emilio Terry; coffee table by Carlo Mollino; and carpet by Judy Ross for Salon Moderne.



Two views of the living room of Spear's Park Avenue apartment: Nail-polish-red floors complement the paintings, *Pasos Miméticos* (1951), by Wifredo Lam, and *Mrs. Harry Winston and Dr. Naude* (1992), by René Francisco and Pon Juan. The ottoman and curtains were designed by Spear. Flower arrangements are by Helena Lehane.

